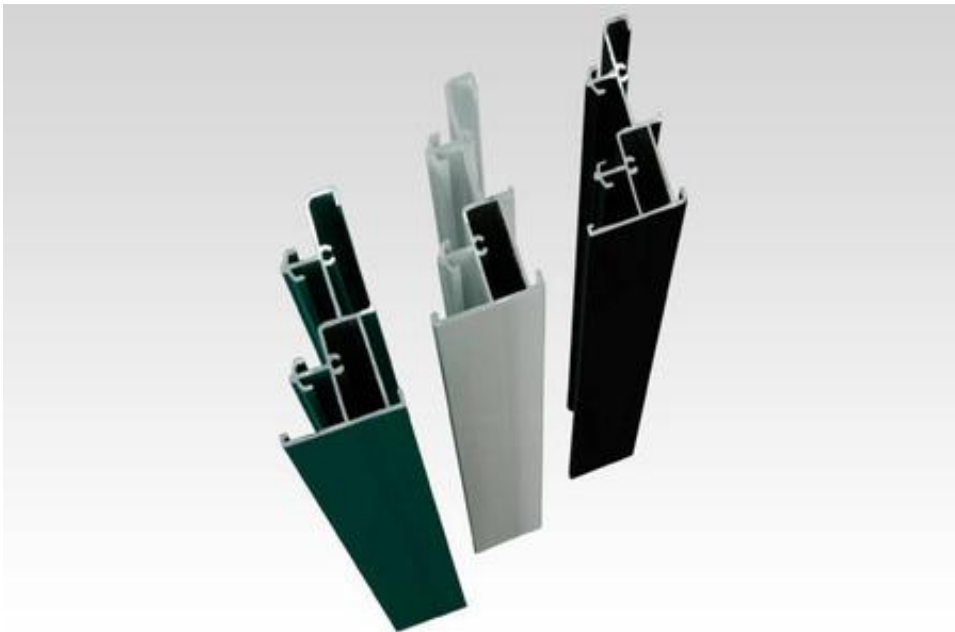

electrophoresis coating aluminium profile





electrophoresis aluminium profile refers to the process of forming a dense layer of resin film on the surface of the aluminum alloy formed by the extrusion of the aluminum alloy in the electrophoretic tank.



The electrophoretic bath consists of acrylic resin, cosolvent and pure water. The electrophoretic process of aluminum profiles consists of four chemical reactions: electrophoresis, electrolysis, electrodeposition, and electroosmosis. The characteristics of the aluminum profile after electrophoretic paint; acid and alkali resistance, anti pollution, delay the aging of aluminum profiles, durable, bright bright, not easy to fade.



It has strong coating hardness, strong impact resistance, high adhesion to paint film, and is not easy to fall off. It has stronger abrasion resistance, weatherability and alkali resistance than aluminum oxide, and its surface color is rich and beautiful. It has a mirror like luster effect.

Product link : <https://www.zlinkage.com/?p=1455>